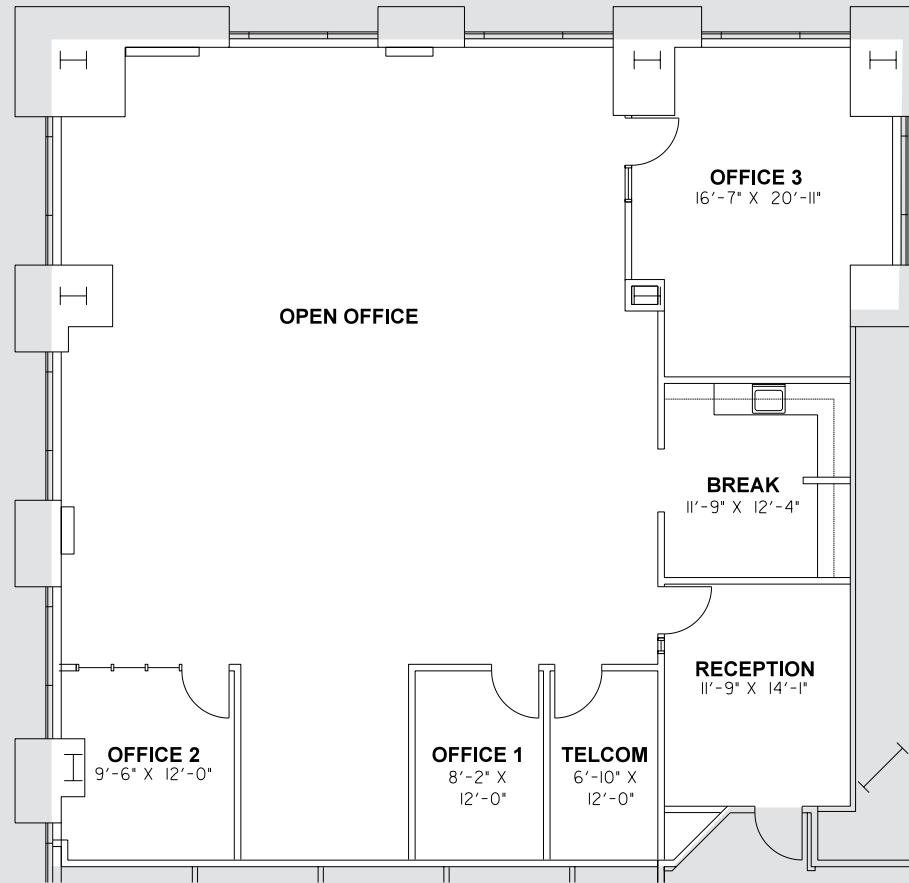
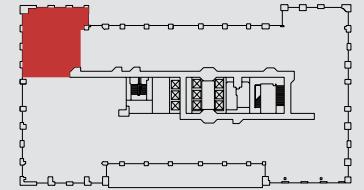


FLOOR PLANS

400 CAPITOL MALL
WELLS FARGO CENTER

SUITE **630**
±3,253 RSF



AVAILABLE Q1 - 2019

RON THOMAS SIOR
Executive Director
Cushman & Wakefield
916.288.4801
ron.thomas@cushwake.com
CA License 01193241

KEVIN PARTINGTON
Executive Director
Cushman & Wakefield
916.288.4807
kevin.partington@cushwake.com
CA License 01199010

SEAN MULLEN
Director
Cushman & Wakefield
916.288.4811
sean.mullen@cushwake.com
CA License 01845406

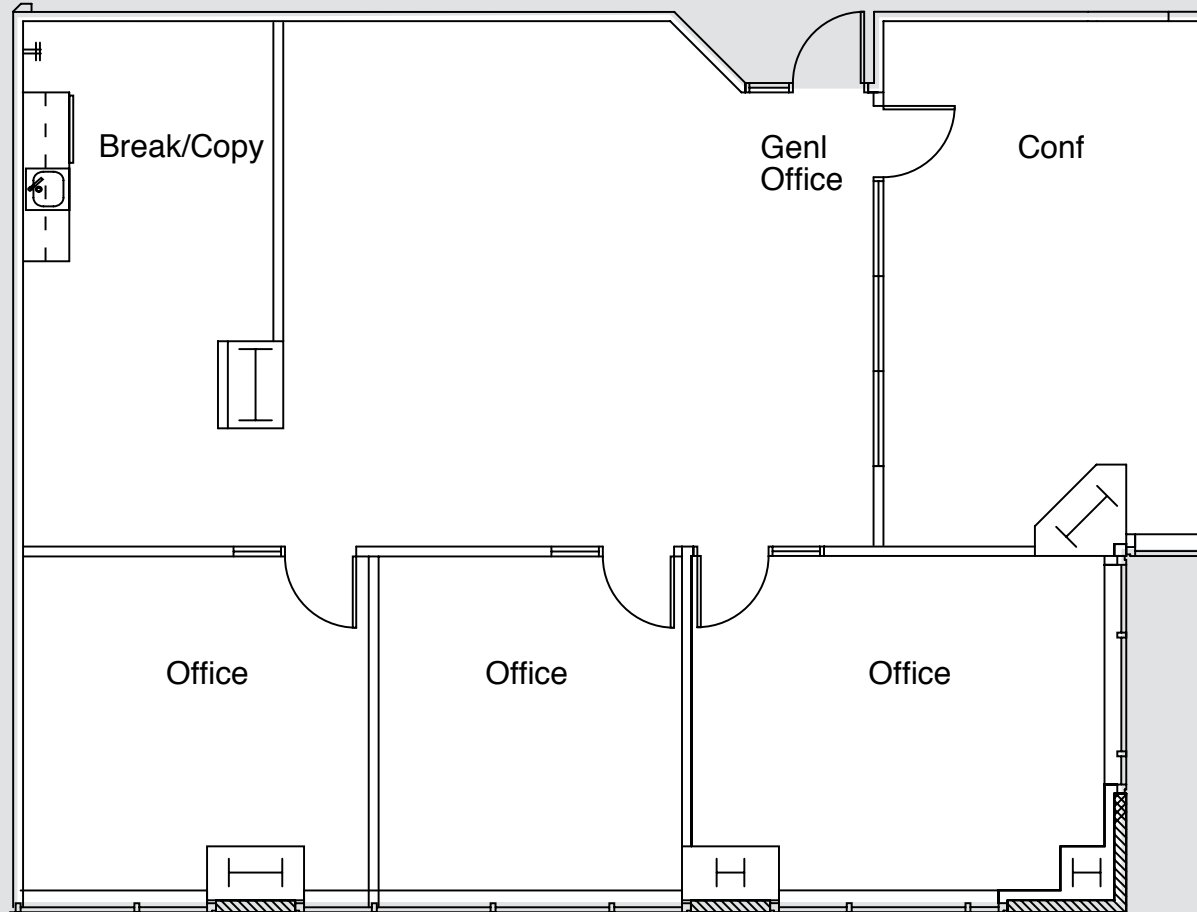
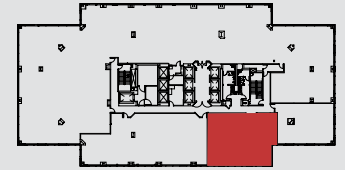
www.400CAPMALL.com



FLOOR PLANS

400 CAPITOL MALL
WELLS FARGO CENTER

SUITE **740**
±2,141 RSF



www.400CAPMALL.com

RON THOMAS SIOR
Executive Director
Cushman & Wakefield
916.288.4801
ron.thomas@cushwake.com
CA License 01193241

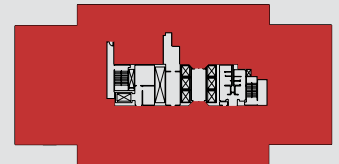
KEVIN PARTINGTON
Executive Director
Cushman & Wakefield
916.288.4807
kevin.partington@cushwake.com
CA License 01199010

SEAN MULLEN
Director
Cushman & Wakefield
916.288.4811
sean.mullen@cushwake.com
CA License 01845406

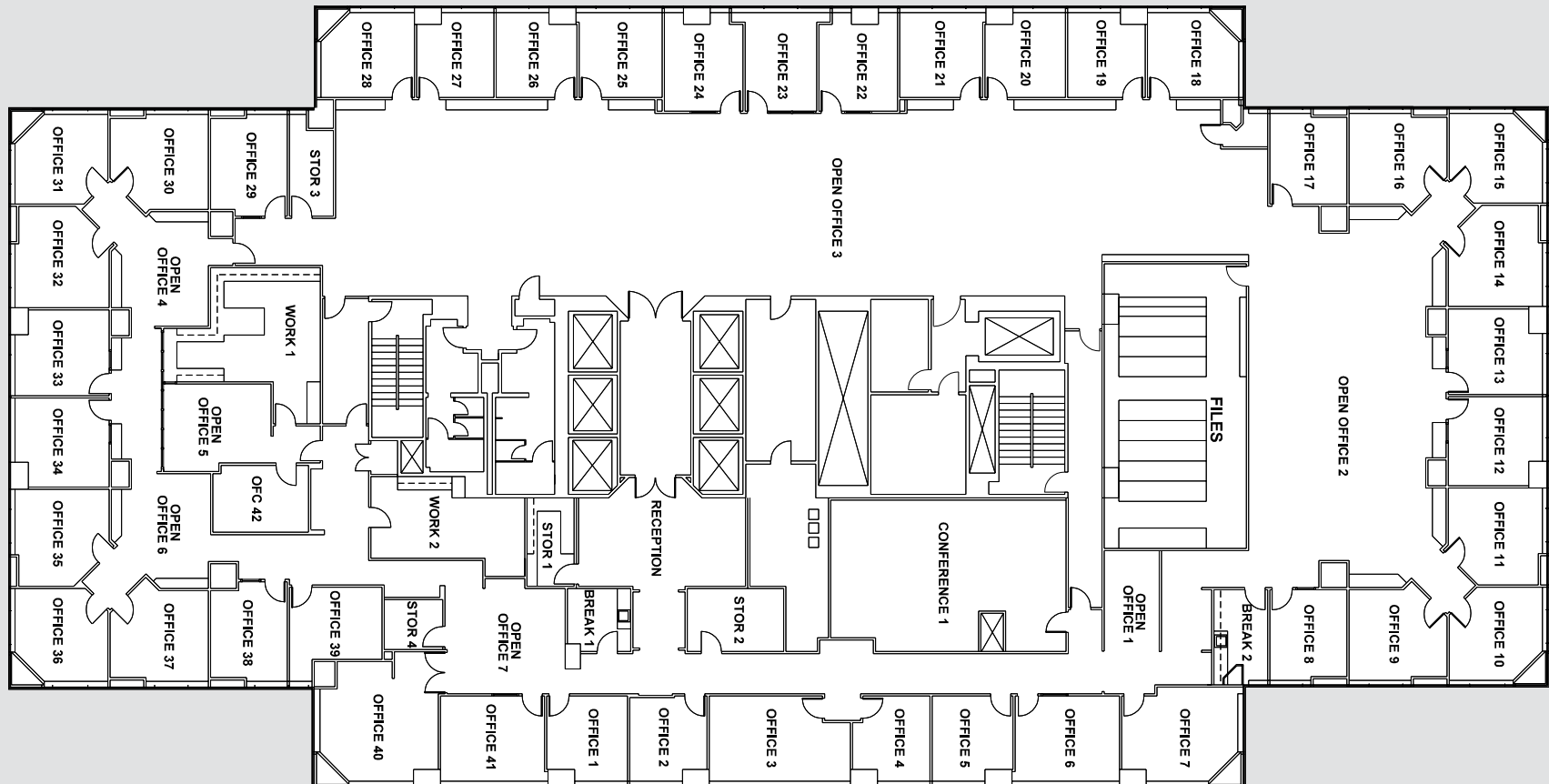


FLOOR PLANS

400 CAPITOL MALL
WELLS FARGO CENTER



SUITE 800
±23,658_{RSF}



www.400CAPMALL.com

RON THOMAS SIOR
Executive Director
Cushman & Wakefield
916.288.4801
ron.thomas@cushwake.com
CA License 01193241

KEVIN PARTINGTON
Executive Director
Cushman & Wakefield
916.288.4807
kevin.partington@cushwake.com
CA License 01199010

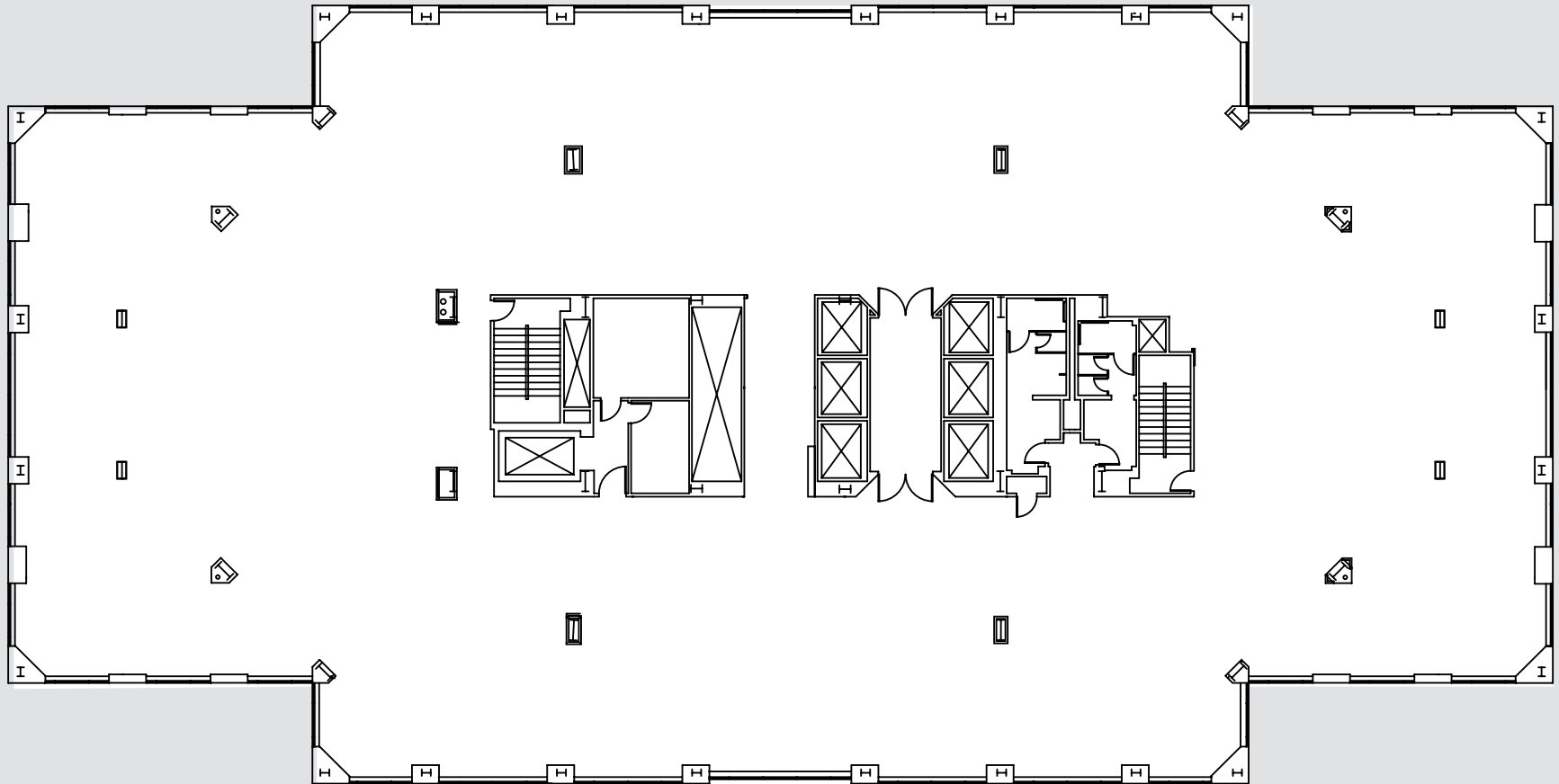
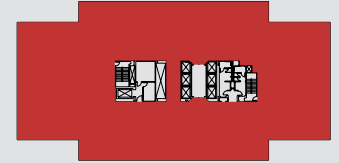
SEAN MULLEN
Director
Cushman & Wakefield
916.288.4811
sean.mullen@cushwake.com
CA License 01845406



FLOOR PLANS

400 CAPITOL MALL
WELLS FARGO CENTER

SUITE 900
±23,658_{RSF}



www.400CAPMALL.com

RON THOMAS SIOR
Executive Director
Cushman & Wakefield
916.288.4801
ron.thomas@cushwake.com
CA License 01193241

KEVIN PARTINGTON
Executive Director
Cushman & Wakefield
916.288.4807
kevin.partington@cushwake.com
CA License 01199010

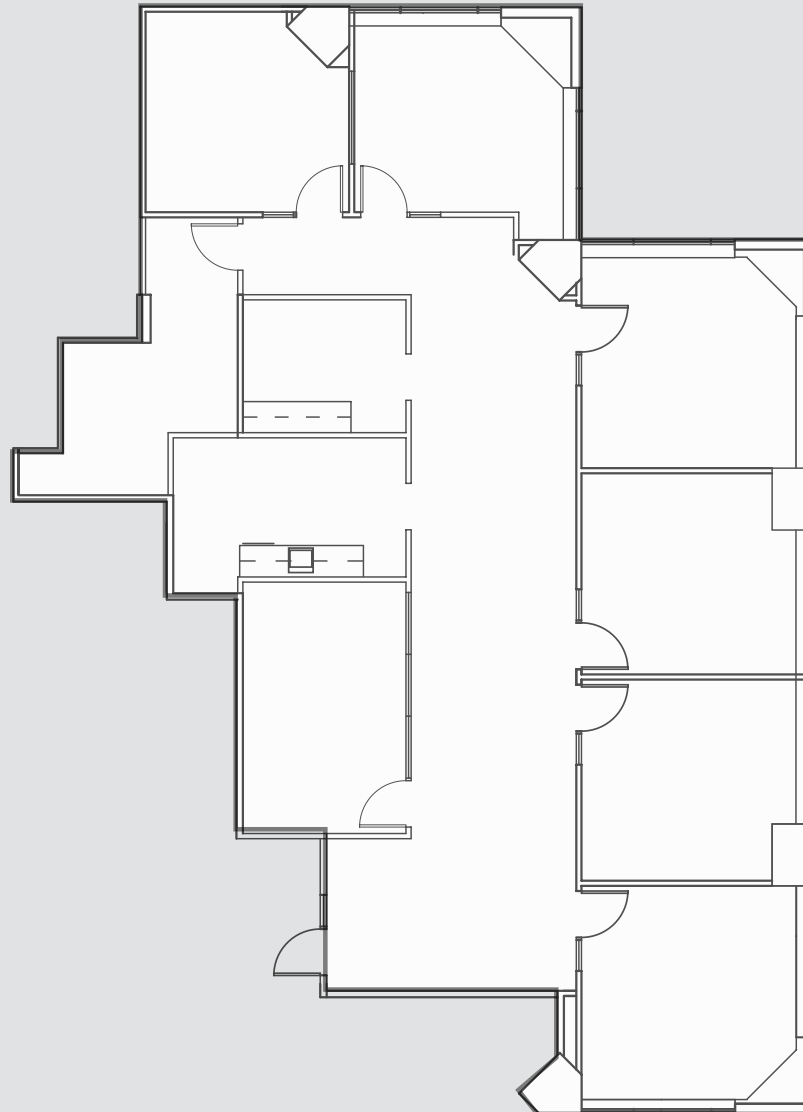
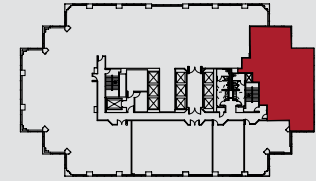
SEAN MULLEN
Director
Cushman & Wakefield
916.288.4811
sean.mullen@cushwake.com
CA License 01845406



FLOOR PLANS

SUITE **1535**
±2,932_{RSF}

400 CAPITOL MALL
WELLS FARGO CENTER



AVAILABLE Q1 - 2019

RON THOMAS SIOR
Executive Director
Cushman & Wakefield
916.288.4801
ron.thomas@cushwake.com
CA License 01193241

KEVIN PARTINGTON
Executive Director
Cushman & Wakefield
916.288.4807
kevin.partington@cushwake.com
CA License 01199010

SEAN MULLEN
Director
Cushman & Wakefield
916.288.4811
sean.mullen@cushwake.com
CA License 01845406

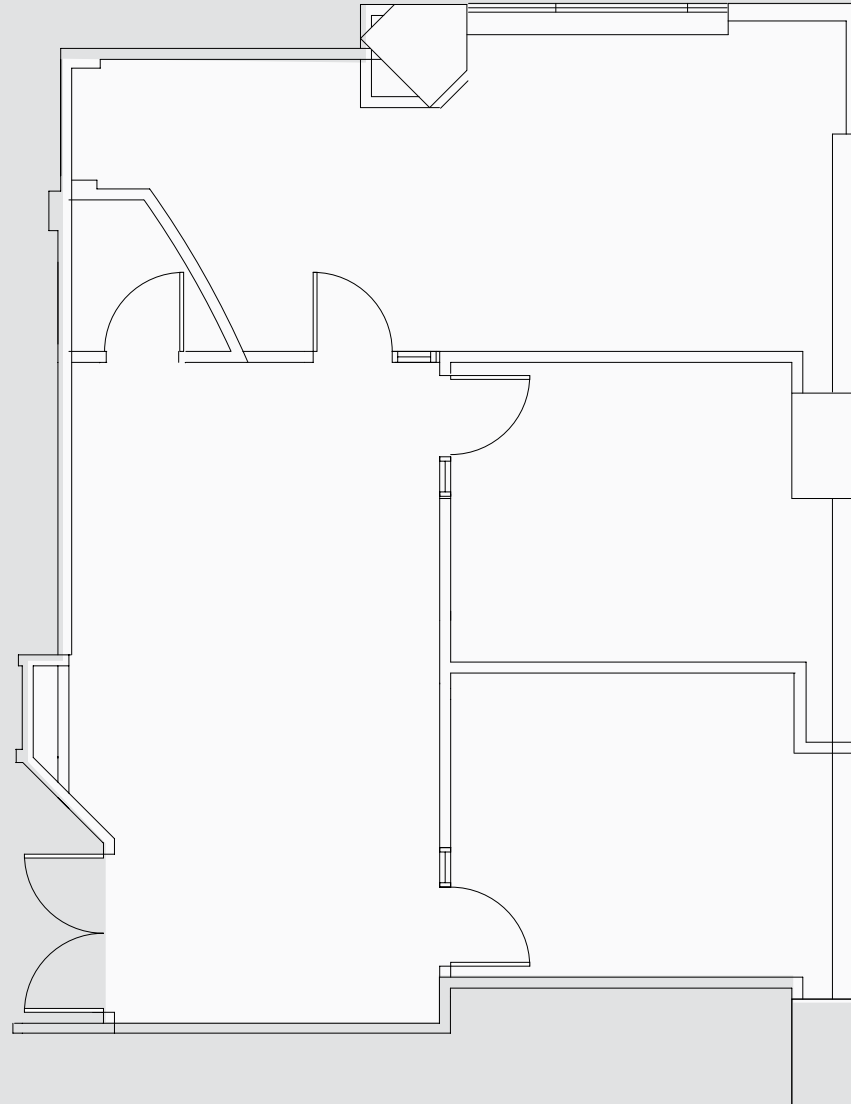
www.400CAPMALL.com



**CUSHMAN &
WAKEFIELD**

FLOOR PLANS

SUITE **1620**
±1,394_{RSF}



www.400CAPMALL.com

RON THOMAS SIOR
Executive Director
Cushman & Wakefield
916.288.4801
ron.thomas@cushwake.com
CA License 01193241

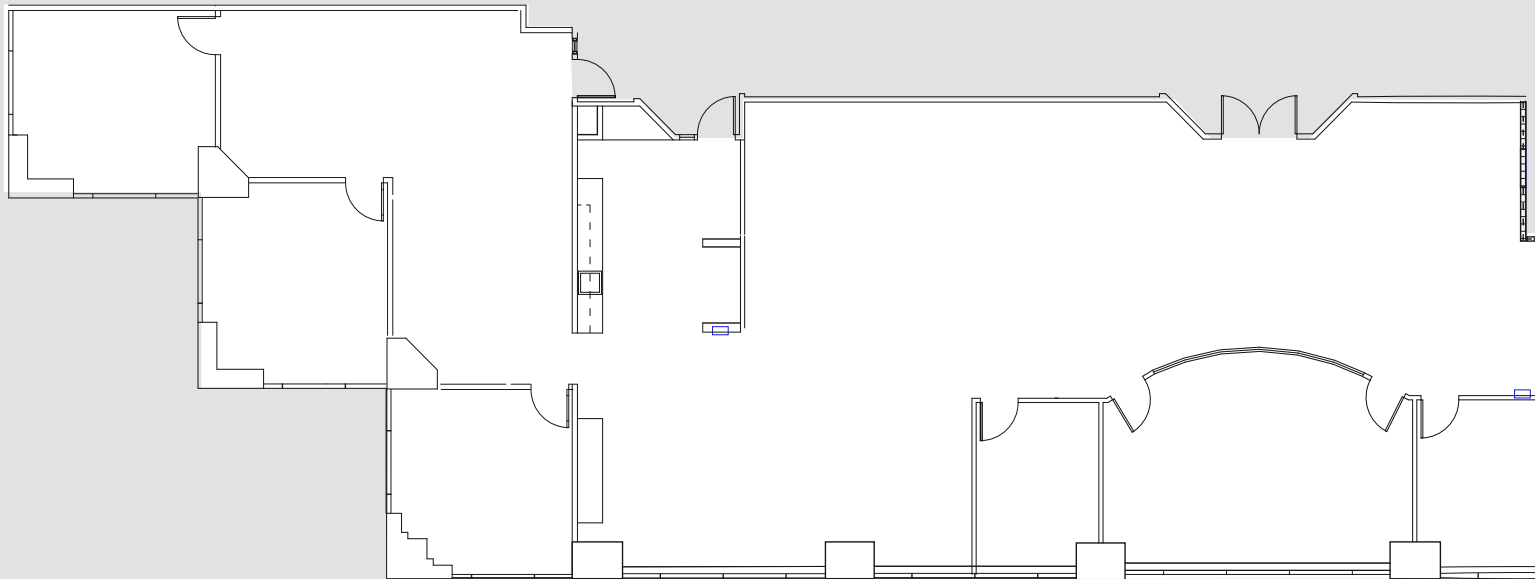
KEVIN PARTINGTON
Executive Director
Cushman & Wakefield
916.288.4807
kevin.partington@cushwake.com
CA License 01199010

SEAN MULLEN
Director
Cushman & Wakefield
916.288.4811
sean.mullen@cushwake.com
CA License 01845406



FLOOR PLANS

SUITE **2650**
±4,993_{RSF}



AVAILABLE Q4 - 2018

RON THOMAS SIOR
Executive Director
Cushman & Wakefield
916.288.4801
ron.thomas@cushwake.com
CA License 01193241

KEVIN PARTINGTON
Executive Director
Cushman & Wakefield
916.288.4807
kevin.partington@cushwake.com
CA License 01199010

SEAN MULLEN
Director
Cushman & Wakefield
916.288.4811
sean.mullen@cushwake.com
CA License 01845406

www.400capmall.com

